



# Experiences in the CARMA Implementation

- integrating ASG Manager Products and SCLM in WDz –

Field Report from Inter Versicherungen, Mannheim

Udo Partsch, Joachim Kaltenbach  
SoforTe GmbH, Langenselbold

<http://www.soforte.com>

<http://www.wd4z.com>

May 8, 2007

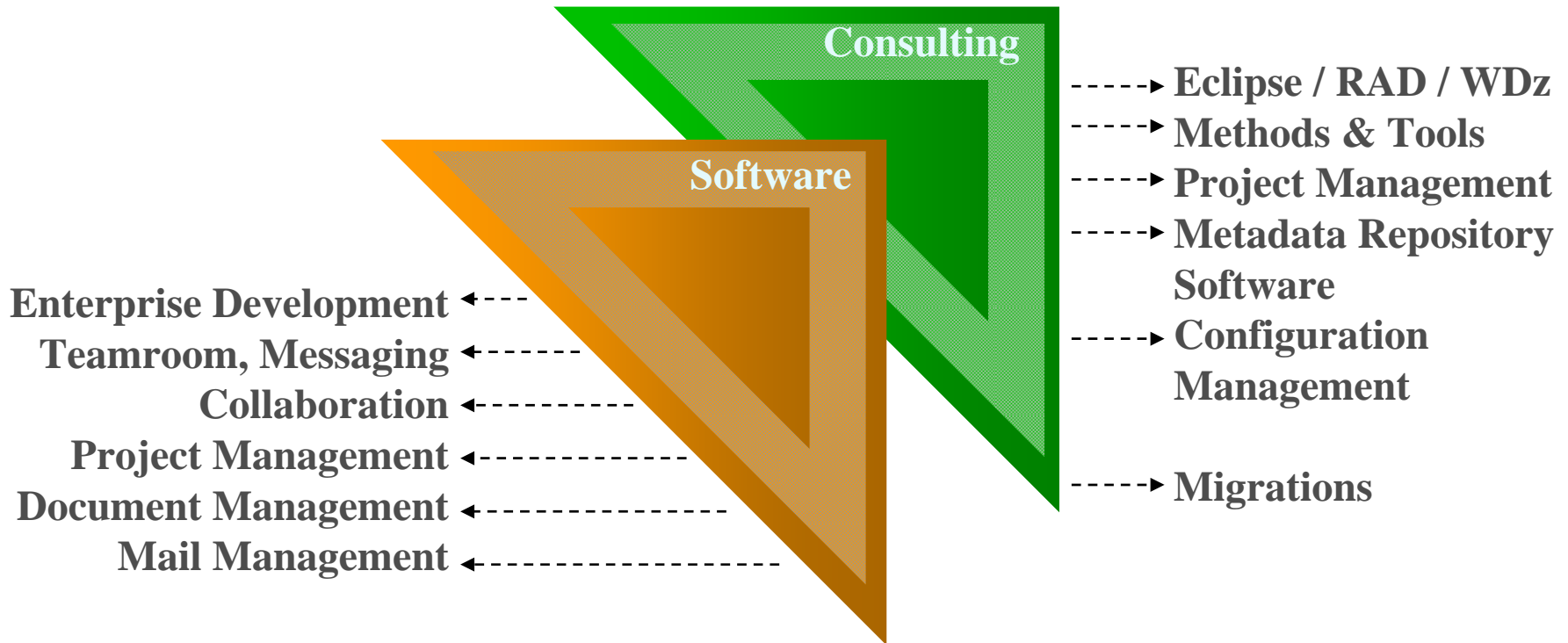


- Introduction
  - SoforTe – Solutions for Teams
  - Inter Versicherungen
  
- IDE
  - current status
  - requirements
  
- Modernization of the IDE
  
- CARMA Implementation

# SoforTe – Solutions for Teams



Your Specialist  
for  
Software Development  
and  
Project Management



# SoforTe Projects 2006 / 2007



- WebSphere Developer for System z (WDz)
  - SCLM / Method Manager Integration via CARMA
  - Panvalet / Rochade / CVS Integration
- Rational Application Developer
  - Build and Promote process for Java Applications
- VAGen → COBOL Migration
- SWT01 → COBOL Migration
- DELTA → COBOL Migration
- IMS → DB2 Migration
- Endeavor → SCLM Migration
- SCLM → ChangeMan Migration
- SCLM Audit
- Manager Products / Oracle Interface

# Inter Versicherungen

---



## Companies:

- INTER Krankenversicherung aG
- INTER Lebensversicherung aG
- INTER Allgemeine Versicherung AG
- INTER-POLSKA

## Associate partner of INTER Versicherungen:

- Bausparkasse Mainz AG – BKM
- Freie Arzt- und Medizinkasse – FAMK

- **Health Insurance**
- Life Insurance
- Property Insurance
- Funding
- Building and loan association

# Inter Versicherungen



Headquarters: Mannheim

Employees:

- 2,500 Office and field staff
- 850 Headquarters
- 60 IT Development

# IDE – current status



## ➤ Target systems

- System z
  - CICS / DB2
  - Batch
  - USS
- WebSphere Application Server

## ➤ Programming languages

- VAGen
- SWT01
- **COBOL**
- **Java**

## ➤ IDEs

- IEO
  - ISPF in-house development
- VAGen
- **RAD / Eclipse**

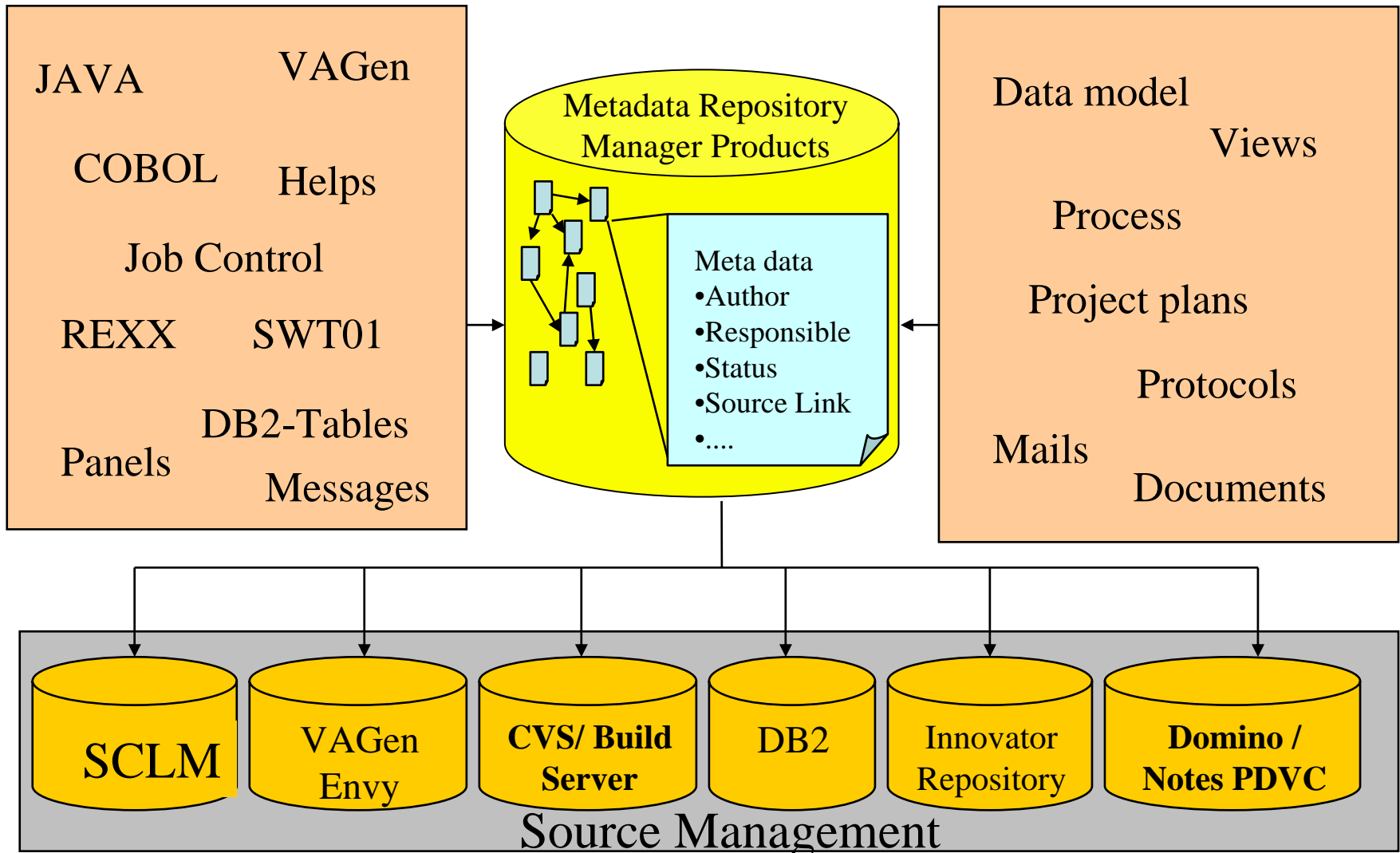
## ➤ Software Configuration Management

- **SCLM**
- VAGen Envy
- CVS / Build Server

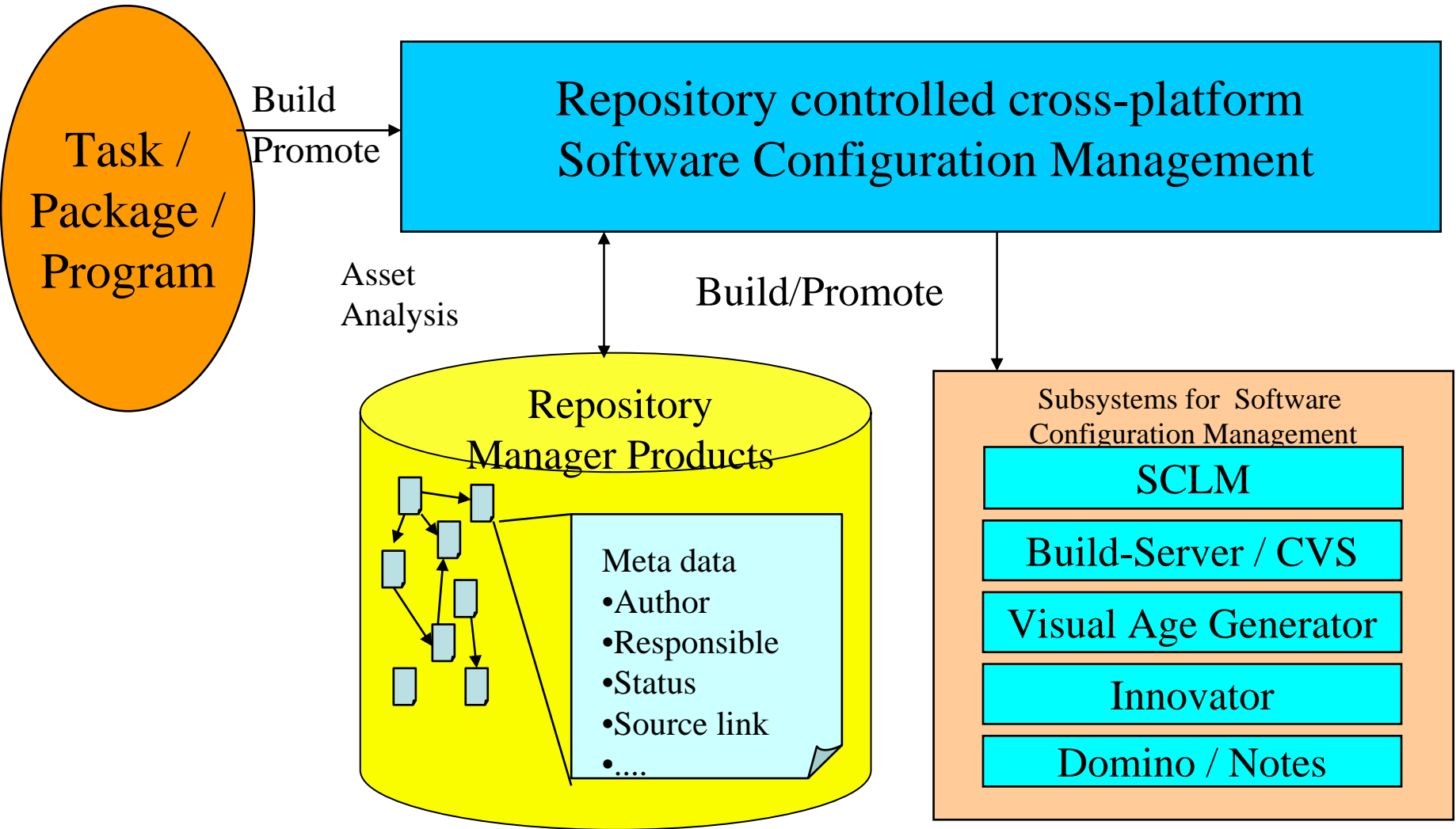
## ➤ Metadata Repository

- ASG - Manager Products

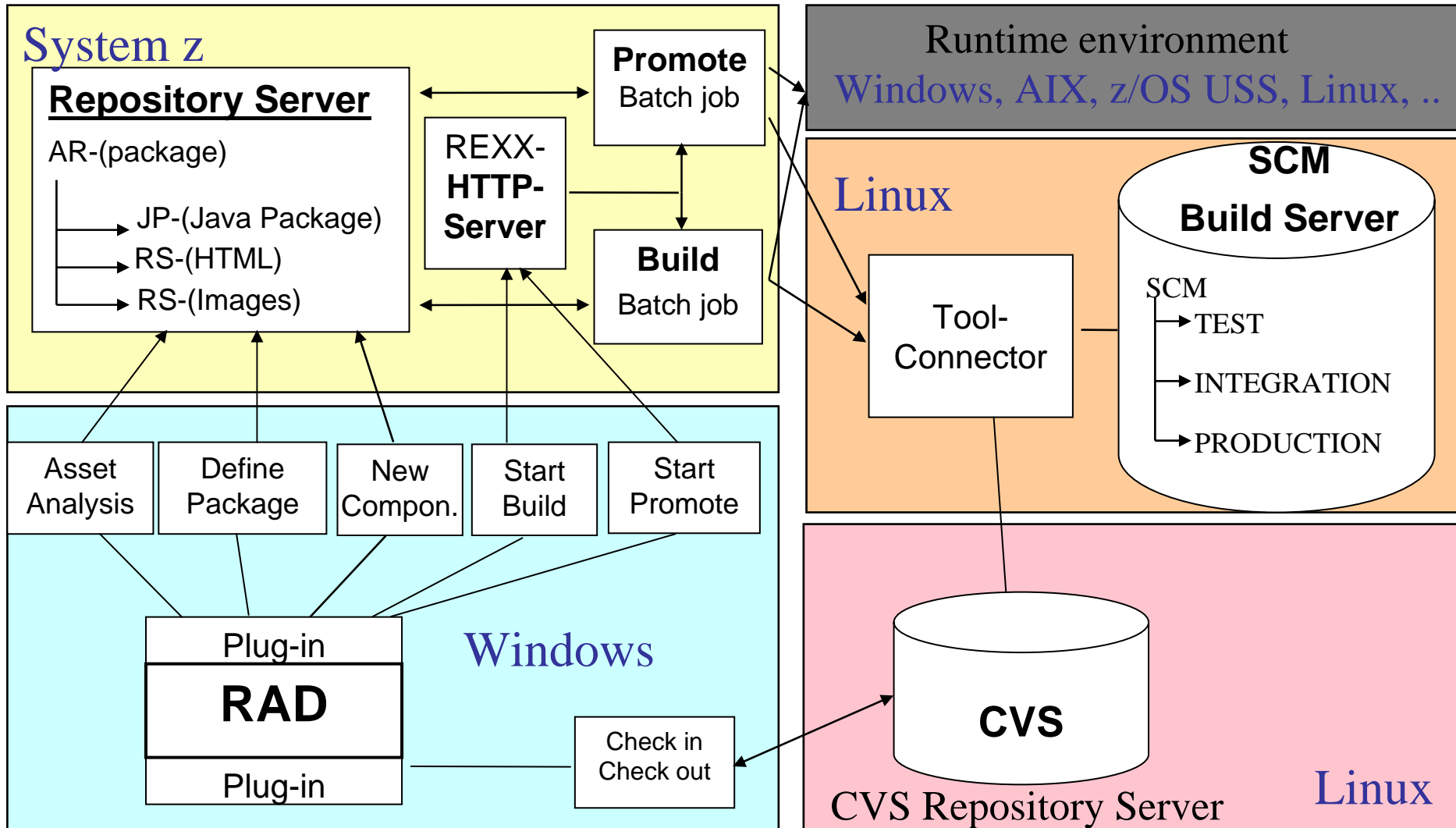
# Repository Metadata Management



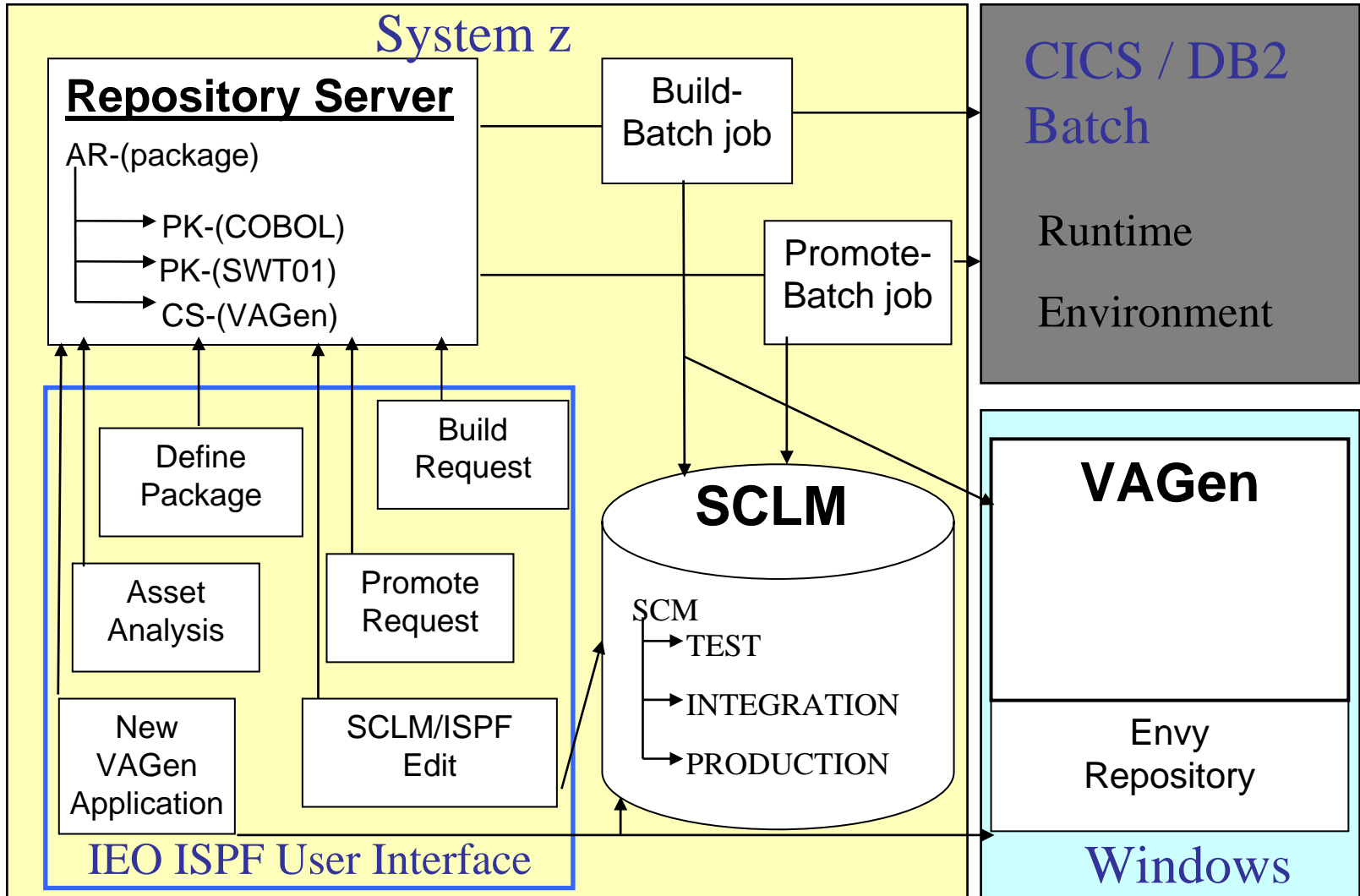
# Repository based SCM



# Architecture for Java Development



# Architecture for Host Development





## ➤ Main issues:

- Single development platform (based on Eclipse)
  - For all developers
  
- Reducing programming languages
  - Strategic
    - JAVA
    - COBOL
  
- Reducing in-house development of application development tools

# Next Steps (ongoing projects)

---



- Implementing RAD / WDz as the standard IDE for Java and COBOL
  - Migration ISPF development → Eclipse development
  - WDz – MPR/SCLM integration based on CARMA
  - Migration CA Intertest → IBM Debug Tool
- Migration VAGen → COBOL
- Migration SWT01 → COBOL

# IDE (planned through end of 2008)

---



## ➤ Target systems

- System z
  - **CICS / DB2**
  - **Batch**
  - **USS**
- **WebSphere Application Server**

## ➤ Programming languages

- **COBOL**
- **Java**

## ➤ IDE

- **WD/z / RAD / Eclipse**

## ➤ Software Configuration Management

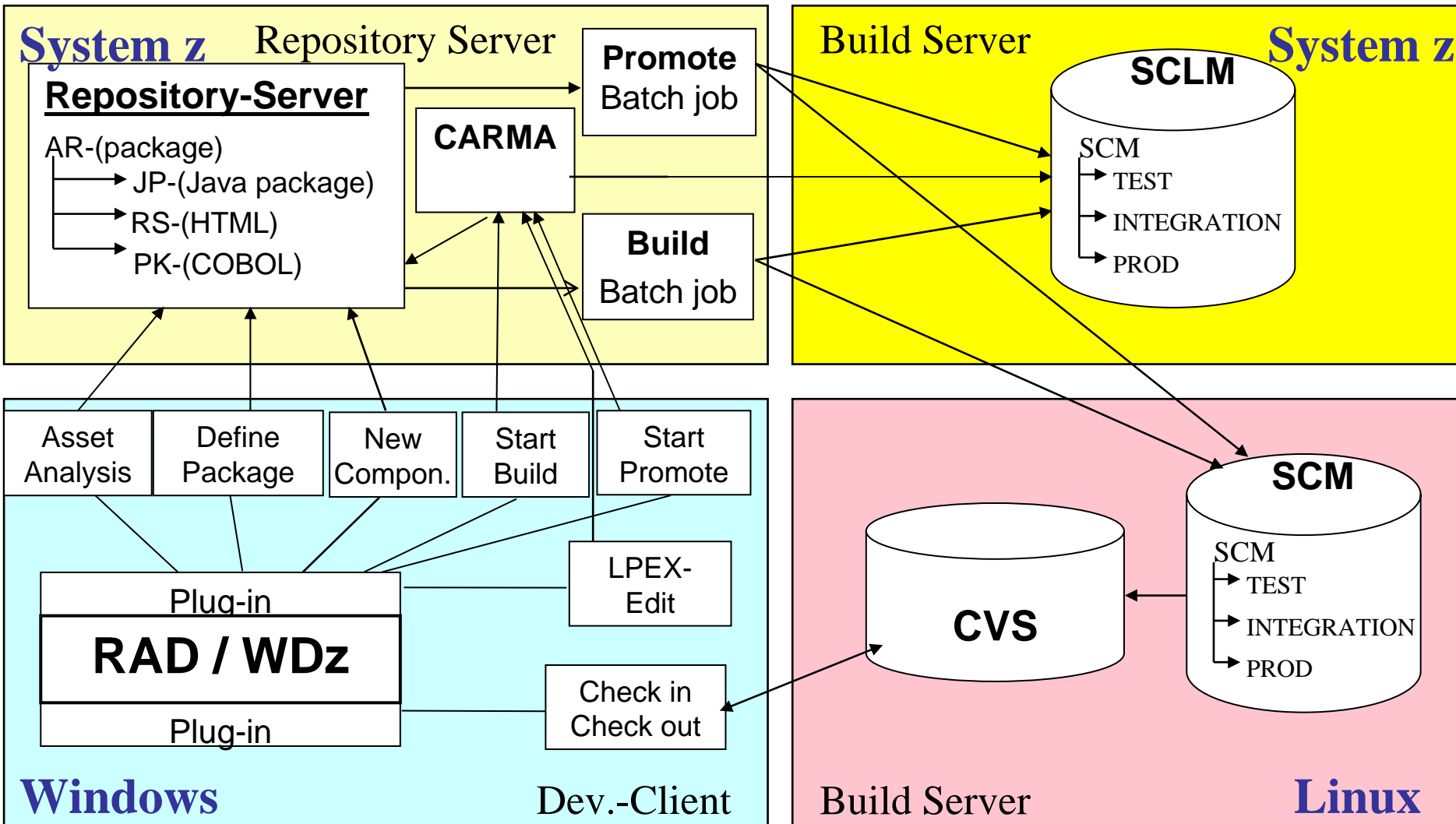
- **SCLM**
- **CVS / Build Server**

## ➤ Metadata Repository

- **ASG - Manager Products**



# Architecture (planned through end of 2008)



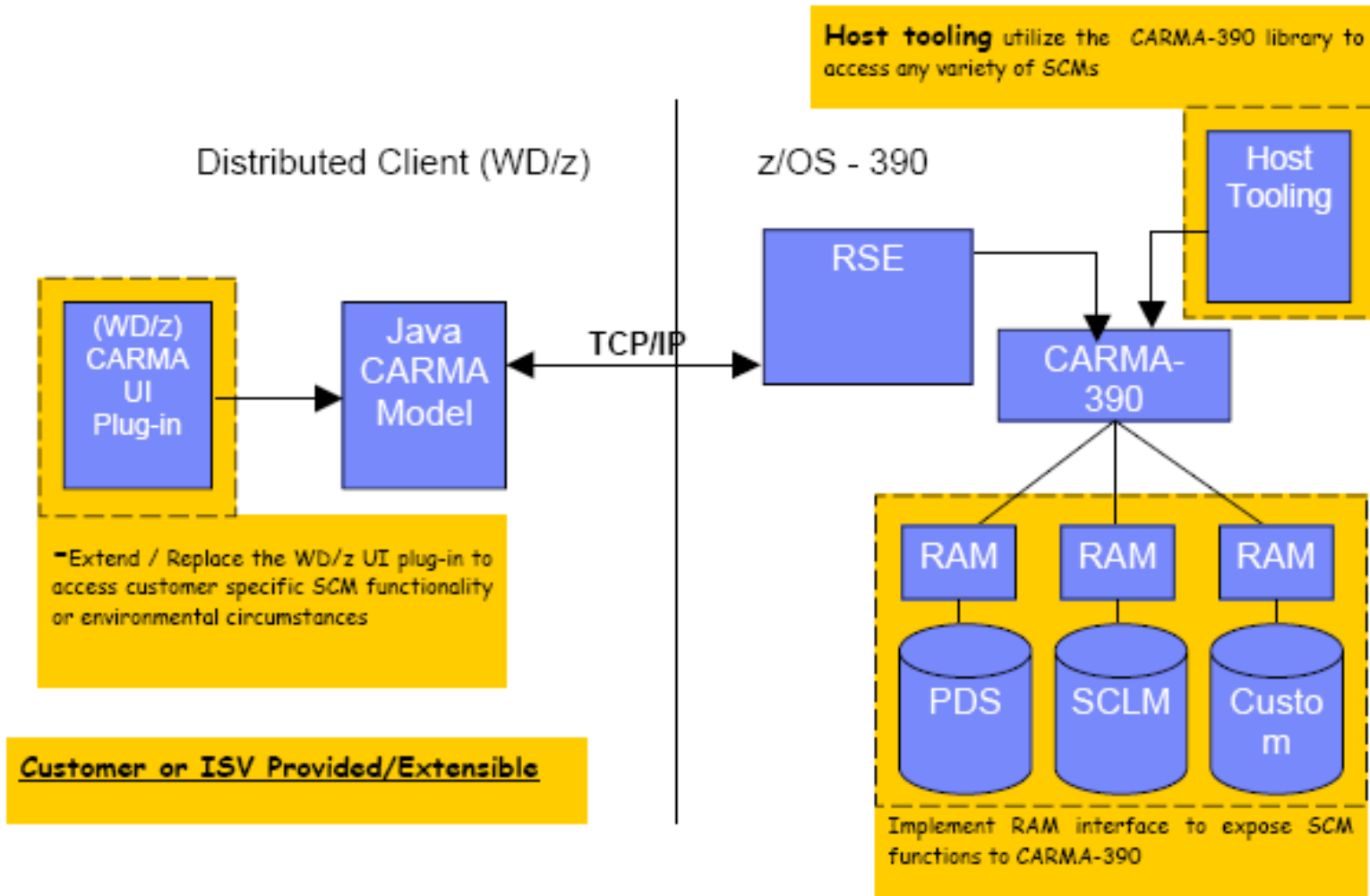
# CARMA Definition and Terms

---

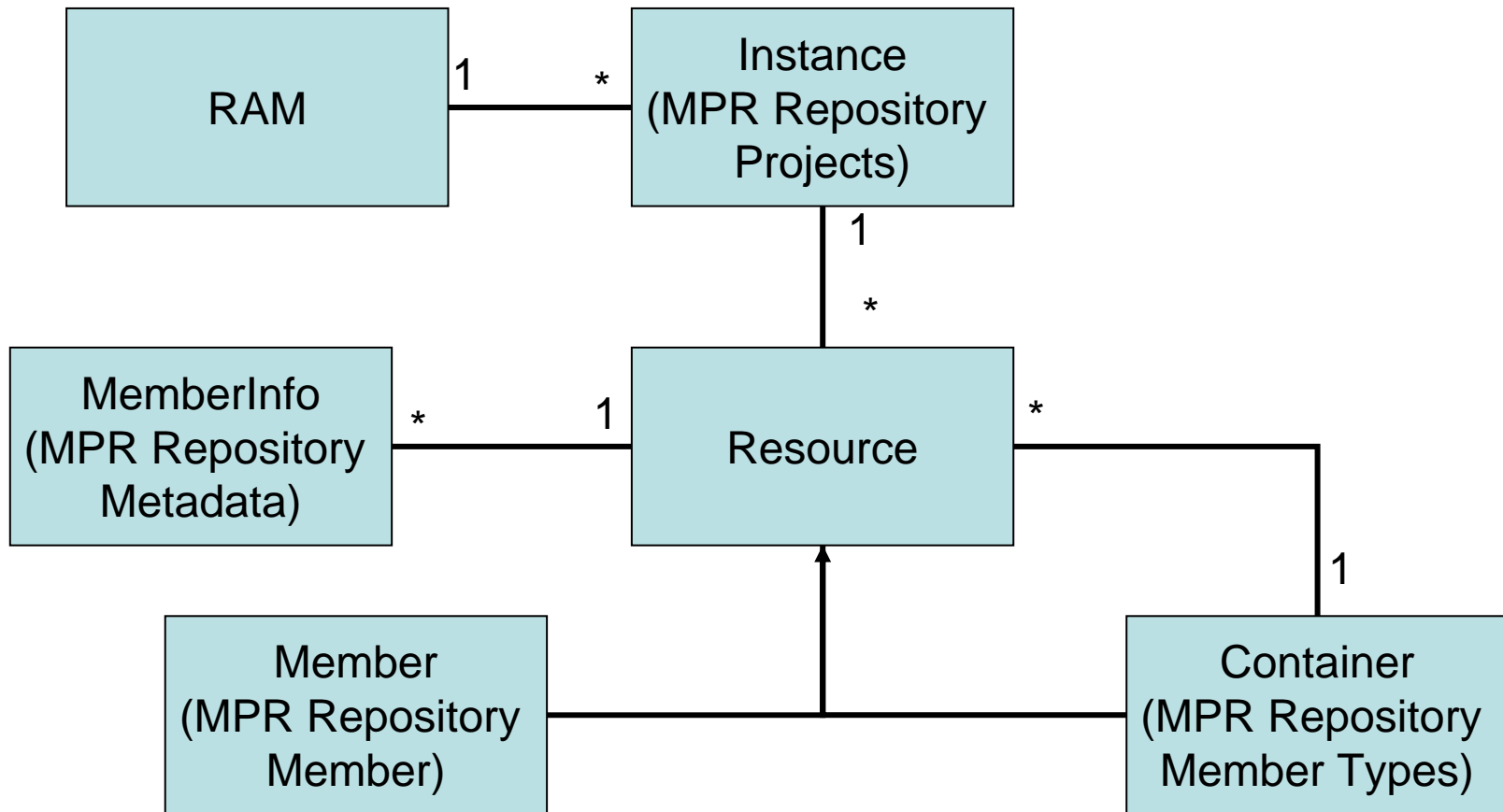


- CARMA
  - **C**ommon **A**ccess **R**epository **M**Anager
  - SCM Framework
- CARMA provides an open interface to adapt a System z SCM tool in WDz
- The CARMA framework can be configured individually.
- The main SCM functions are predefined.
- User defined functions can be added to the interface.
- RAM
  - **R**epository **A**ccess **M**odule
  - DLL, which implements the CARMA interface

# CARMA Architecture



# CARMA RAM Architecture





## ➤ RAM

- Repository based
- Access to ASG Manager Products
- RAM Implementation in C, but ...
  - Calling REXX for each function implemented
  - Reusing Inter's SCM tools implemented in REXX

## ➤ CARMA Client

- Extending the CARMA Client where necessary

# CARMA Implementation - Functions



- Functions needed in the CARMA context menu of a repository member (1)
  - SCLM-Edit - remote LPEX Edit, including:
    - Find the SCLM member in the hierarchical dataset view
    - Lock the member in the SCLM development group
    - Send the member to the LPEX-Editor
    - SAVE a member in a SCLM development group (if changed!)
    - Unlock a member in SCLM
  - SCLM-Browse – remote LPEX Edit (view mode)
  - Create a new SCLM-Member
    - Skeleton support
    - Offer a new valid member name
    - Testing naming convention
    - Edit a short description
    - Create the repository member
    - LPEX Edit of the SCLM member
    - Prompt the SCLM language

# CARMA Implementation - Functions



- Functions needed in the CARMA context menu of a repository member (2)
  - Copy a SCLM member
    - Offer a new valid member name
    - Testing the naming conventions
    - Edit the short description
    - Copy the repository member
    - LPEX Edit of the copied SCLM member
  - Unlock a SCLM member
  - Update the short description of a member
  - SCLM Build
    - Batchjob
    - Additional view to show the status of running jobs
    - Error feedback (?)
  - SCLM Promote
    - Batchjob
    - Additional view to show the status of running jobs

# CARMA Implementation - Functions



- Functions needed in the CARMA context menu of a repository member (3)
  - View SCLM metadata (accounting information, build map information)
    - Implement the SCLM/DT dialog in the CARMA view?
  - View SCLM members from the version dataset
    - Implement the SCLM/DT dialog in the CARMA view?
  - Define a package of members
    - Reuse an existing in-house plug-in (from JAVA development support)
  - Dialog to edit options
    - Compile options
    - Link options
    - Test option
    - ....
  - Delete a SCLM member
  - Compare two SCLM members

# Questions

---



# Life Cycle Model of the Prototype

